

Worship Updates

August 15, 2021

F I R S T

 **CHRISTIAN**

C H U R C H



Worship Status Update

August 15

On 8/10/21 the FCC Covid Response Team met and reviewed the number of daily new cases of covid in Lane County and updated guidelines for in person worship.

THIS WEEK cases are the highest they have ever been. Lane County Residents are at a VERY HIGH risk of exposure to the Delta variant of Covid-19.

Lane County Public Health issued an advisory on Tuesday (8/10) to all businesses and organizations to return to masking indoors, regardless of vaccination statuses. The Governor reinstated the indoor mask mandate on Wednesday. LCPH further encouraged us to consider more restrictions than just masks.

We will not meet for in person worship this week, Sunday August 15.

Zoom & YouTube Worship

August 15

02

Pastors and Musicians will broadcast from the sanctuary this week and the congregation will watch remotely via Zoom or YouTube.

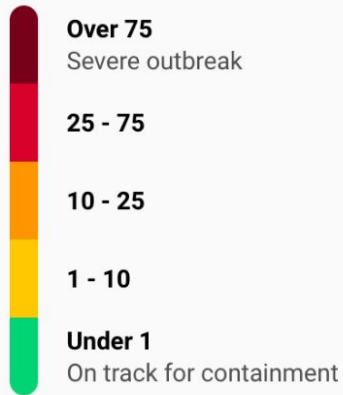
With the risk level this high, it is important we all do our part to flatten the curve once again.

Using the data and recommendations from covidactnow.org and Lane County Public Health, pastors now have a way of better forecasting and adjusting our reopening guidelines and restrictions to go with them.

We will return to in person worship, under our phased reopening guidelines, as the number of daily cases reduces.

Daily new cases

Daily new cases is the number of new COVID cases per day per unit of population
(we measure per 100K people).



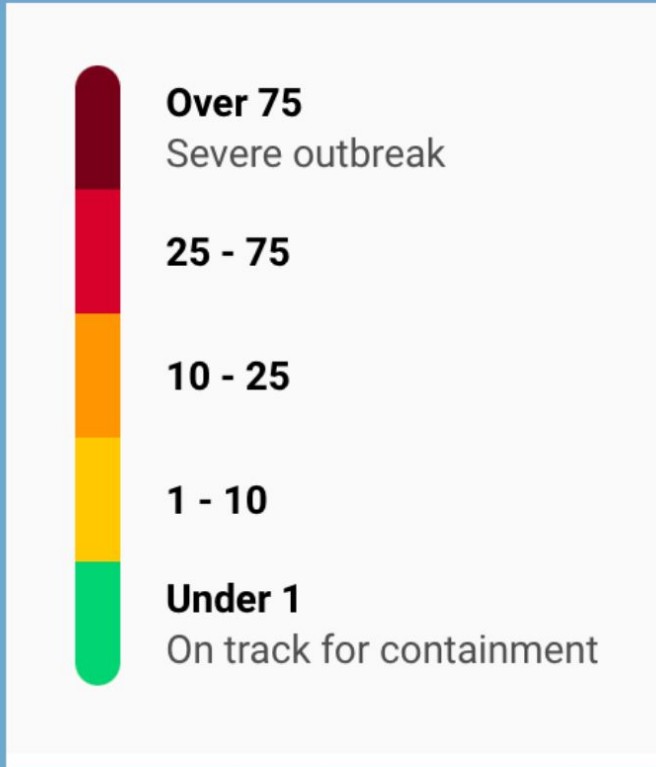
We have been using the guidance and information from Lane County Public Health and [covidactnow.org](https://www.covidactnow.org)

The chart to the left assigns the number of daily new cases to a color.

Dark Red and Red are severe and very high numbers of cases. Orange, yellow, and green signify lower case counts.

FCC Updated Guidelines for In Person Worship

04



Source: Covidactnow.org

RISK LEVEL

WORSHIP STATUS

Dark Red/Extreme Remote Worship/Remote Work

Red/Very High Remote Worship - worship team in building

Orange/High In Person worship with 50 person capacity, social distance & masks. Instrumental music okay but no singing, fellowship okay but no refreshments

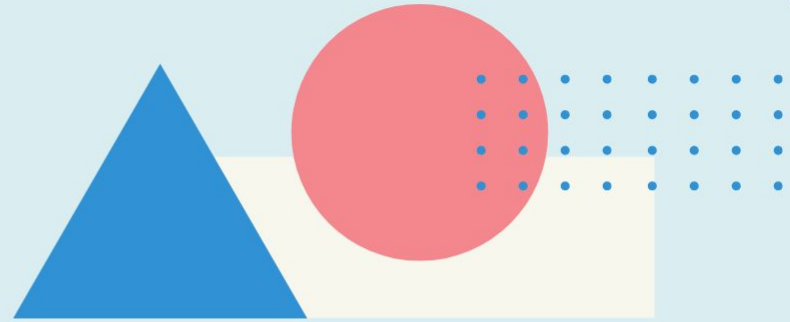
Yellow/Medium In person worship with 100 person capacity, social distance & masks. Singing & refreshments outdoors.

Green/Low

In person worship with masks

Summary

06
05



We will be watching the daily number of cases in Lane County closely. You can monitor along with us by visiting covidactnow.org and tracking the daily new cases.

As cases reduce, we will resume in person worship, with some restrictions and capacity limits, as stated previously. See the "Returning to In person Worship Slide Presentation" for reminders of those items.

As cases increase, we will take the necessary and now clearer steps, to reduce the number of people gathered indoors and reduce transmission in our community.